

Power Supplies - Heavy Duty Series

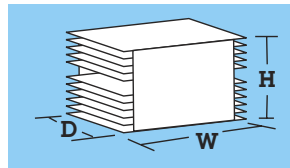


Specifications

Model	Nominal Input VAC	Output Amperage		Case Size Ref.	Weight	
		Intermittent	Continuous		Lbs.	Kg.
12 Volt Output						
115-12-8	115/230	8	5	P-2	10	4.5
115-12-20A	115/230	20	8	P-3	20	9.1
115-12-35CD	115/230	35	35	P-5	32	14.6
24-Volt Output						
115-24-10	115/230	10	4	P-3	20	9.1
115-24-18CD	115/230	18	18	P-5	32	14.6
115-24-35CD	115/230	35	35	P-6	60	27.3

Case Size

	Inches			Centimeters		
	H	W	D	H	W	D
P-2	6.0	4.6	8.5	15.2	11.7	21.6
P-3	5.7	4.8	16.3	14.5	12.2	41.4
P-5	6.5	9.5	14.0	16.5	24.1	35.6
P-6	6.5	13.0	18.75	16.5	33.0	47.6



Output Voltage

12 V Models:

13.6 VDC (Internally adjustable 12.6-14.5 VDC)
Ripple: 40mV P-P (@ 110-125/220-250 VAC input)

24 V Models:

24.5 VDC (Internally adjustable 21-27.5 VDC)

Note: When modified for battery charger operation output voltage is factory set at 27.2 VDC

Ripple: 70mV P-P (@ 110-125/220-250 VAC input)

Regulation All Models: 1% Line and Load (@ 110-125 / 220-250 VAC input)

Heavy Duty Series

- Designed for powering 12 and 24 VDC communication/navigation equipment aboard commercial vessels where reliability is the primary consideration.
- Input voltage 115 or 230 VAC selected by slide switch on the front panel.
- Excellent Regulation and Ripple Spec: Output voltage maintained within 1% under all line and load conditions within rating; Ripple is less than 40 mV P-P. (12 volt) or 70 mV P-P (24-volt).
- Polyurethane conformal coated PC board and corrosion resistant heavy duty aluminum case with integral shock mounts assures survival in hostile environments.
- Heat generated by semi-conductors is extracted and dissipated by large heat sink fins that maximize air contact for cool operation and long life of components.
- Supply and Load Circuit Protection: overvoltage, current limit; (set @ 105% of intermittent rating), thermal overload and input/output fusing.
- Thermally activated cooling fan on "CD" units.

Input Range

105-125/210-250 VAC (selectable), 50-60 Hz
Derate to 50% output below 110 and 220 VAC

Operating Temperature

Standard Units

0-50°C, Derate Linearly From 100% @ 40°C
To 50% @ 50°C Thermal shutdown @ 85°C
Case temperature

C.D. Units

0-65°C, Derate Linearly From 100% @ 50°C
To 50% @ 65°C Thermal Shutdown @ 85°C
Case temperature

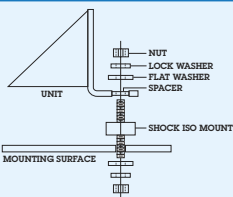
Duty Cycle

Intermittent: 20 minutes max on time,
20% duty

Continuous: 24 Hours/Day 100% Duty

Options

- Use as a Battery Charger
- Output voltage adjust (see Output Voltage for range)
- Transfer relay for back up battery in event of power failure (ERC option see page 15)



Option: Extreme Vibration Mounting Kit

The Extreme Vibration Mounting Kit is available to protect NEWMAR power converters from the extreme stresses of shock and vibration when mounted on high-vibration vehicles.

The kit (pictured here) replaces the standard vibration kit provided with the unit and fits into the unit's mounting flange to act as a "super shock absorber" for electronics in high-vibe applications. It is available to fit all NEWMAR units from 2 to 70 lbs. Specify KIT-L for units which weigh 2-15 lbs. and Kit-H for units which weigh 16-70 lbs.